



# ALASKA

## 7-Night Alaska Cruise



**August 17-24, 2024**

One of the most scenic and thrilling cruises is Alaska, and this 7-day itinerary even includes Icy Strait Point and its wilderness experiences. Just outside of Juneau is where you'll find the majestic Mendenhall Glacier. Walk the nature trails and explore the Visitor Center with its view of the Juneau Ice Field. Icy Strait Point is home to the largest Native Tlingit village in the state and its waters are teeming with wildlife, including orcas and humpbacks. Since every shop at Icy Strait Point is Native-owned, this is the place for authentic goods and handicrafts. Your last port is Victoria, the oldest city in the Pacific Northwest. With its green spaces and Victorian architecture, it is stunning. See Butchart Gardens and the stately Craigdarroch Castle.

**Round Trip Airfare Included  
from Detroit to Seattle**

*This is a self-guided travel program without a Custom Holidays host. Upon arrival in Seattle, a meet and greet at the airport is provided by NCL along with round-trip cruise transfers.*



**Cruise & Airfare: \$2,999 per person (effective 2/6/24)**

**Balcony Cabin**

Double Occupancy Rates. Please note these prices do not include Travel Protection (optional) & Crew Gratuities. Based on availability.





## YOUR SHIP: NORWEGIAN BLISS



Custom-built for the spectacular, Norwegian Bliss features a revolutionary Observation Lounge for you to soak in every stunning moment, from bald eagles soaring over glaciers to dolphins splashing through warm turquoise waters. Come aboard and experience the best dining, entertainment, and amenities at sea against a backdrop of unrivaled natural beauty.



**168,028**  
Gross Register  
Tonnage



**4,004**  
Guest  
Capacity  
double occupancy



**1,094ft**  
Overall  
Length



**136ft**  
Max  
Beam



**2018**  
Year Built



**1,716**  
Ship  
Crew



## BALCONY CABIN

See the world like never before. Floor-to-ceiling glass doors open to your very own private balcony. Stylish and sophisticated appointments enhance these modern rooms.

Total Approx. Size: 214-367 sq. ft.  
Balcony Size: 38 sq. ft.

## FREE AT SEA INCLUSIONS:

**ULTIMATE BEVERAGE PACKAGE**

**2 NIGHTS SPECIALTY DINING**

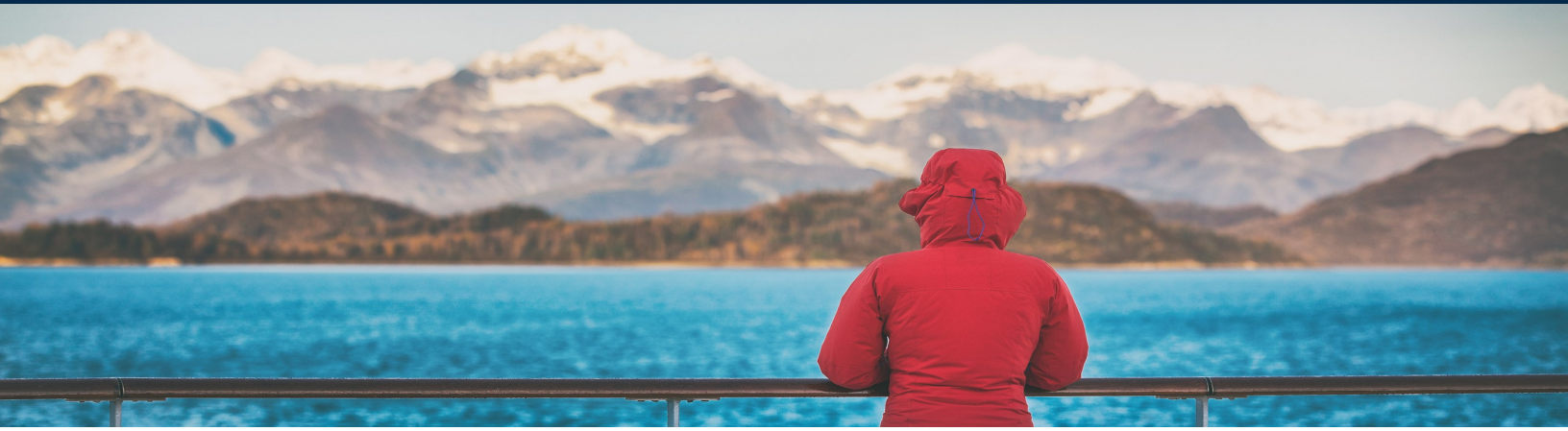
**\$50 SHORE EXCURSION CREDIT**  
(PER CABIN, PER PORT)

**150 MIN WIFI PACKAGE**





# CRUISE ITINERARY



## Day 1: Saturday, Aug 17, 2024

### Seattle, Washington (EMBARK)

Seattle sits on the slip of land between Puget Sound and Lake Washington, with the Olympic and Cascade Mountains serving as a dramatic backdrop for this oh-so cosmopolitan city. Soar up the futuristic Space Needle and experience the views atop this stunning landmark created for the 1962 World's Fair.



## Day 2: Sunday, Aug 18, 2024

### At Sea

Get ready for amazing views and wildlife like nowhere else as you sail along the coast.

## Day 3: Monday, Aug 19, 2024

### Sitka, Alaska

Sitka is a charming island community surrounded with stunning mountain and seaside panoramic views. The vast and rich wildlife boasts sightings of whales, brown bears, deer, sea otters, and various birds flock here. This destination offers superb fishing, and plentiful historical attractions.



## Day 4: Tuesday, Aug 20, 2024

### Juneau, Alaska

Juneau has been called "Alaska's peak experience," certainly due in part to its unparalleled glacier viewing from such places as Tracy Arm Fjord, the Juneau Icefields and Glacier Bay National Park. Kayak up one of the area's many protected waterways, go flightseeing, tour historic downtown or try your hand at panning for gold. The majestic Mendenhall Glacier lies nearly 12 miles outside Juneau, a trek worthwhile.



### Edicott Arm—Dawes Glacier

This is why visitors come to Alaska—to see glaciers as magnificent as Dawes—and getting there is half the excitement. From Stephens Passage, your ship will turn into the glacially carved fjord of Endicott Arm, the southern sister fjord to Tracy. However, Endicott is special. It's the fjord less travelled, and at its head, Dawes Glacier. But first, the 31-mile fjord. Sheer granite walls. Plunging waterfalls. Spruce and hemlock trees clinging to the steep sides. It is the definition of pristine. Look for "bergy bits," floating chunks of glacial ice, some looking more like sculptures,

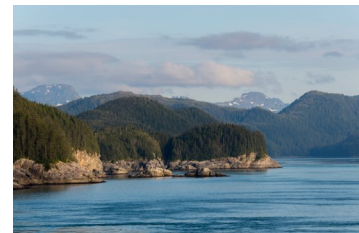
some with resting seals on top. Keep an eye open for bears, mountain goats and whales, too. As we approach the glacier, listen for thunderous cracks and have your camera ready. Dawes is an active tidewater glacier that recedes daily causing calving, where huge hunks of ice plunge into the sea. At 600 feet tall and a half-mile wide, this blue-hued, powerful glacier may be the highlight of your Alaska cruise.



## Day 5: Wednesday, August 21, 2024

### Icy Strait Point

Venture "where the north wind doesn't blow." Known for this famous saying, Icy Strait Point is the ideal landing spot for adventurers seeking a new experience. Breathtaking and exciting, Icy Strait Point truly takes you where the wild things are. It's one of the few places in the world



where wildlife outnumbers the human population. A trip here certainly satisfies your taste for adventure. Take a cruise from Icy Strait Point and enjoy Alaska's awe-inspiring scenery and the many excursion options that Norwegian Cruise Line has to offer.

## Day 6: Thursday, August 22, 2024

### Ketchikan (Ward Cove)

Its Tlingit name, Kach Khanna, means "spread wings of the eagle." Chances are you'll see one of these magnificent birds perched atop a Sitka tree. Thanks to its abundant rainfall, Ketchikan is surrounded by some of the world's most lush wilderness.

## Day 7: Friday, August 23, 2024

### Victoria BC Canada

Roam the spacious lawns of stunning Butchart Gardens with its exotic flora, unusual topiary and exquisite fountains. Explore historic Bastion Square, the treasures of Chinatown and the many sights and sounds to be found along the boardwalk of the Inner Harbour.



## Day 8: Saturday, August 24, 2023

### Seattle, Washington (DISEMBARK) - Return Flight Home



# Cruise Reservation Application—Passenger 1

\$2,999 per person (effective 2/6/24)—includes RT Airfare. \$250 Deposit Per Person Due with Registration. Final Payment Due April 19, 2024.

Name: \_\_\_\_\_ / \_\_\_\_\_ / \_\_\_\_\_  
(as appears on passport) (First Name) (Middle Name) (Last Name)

Address: \_\_\_\_\_ / \_\_\_\_\_ / \_\_\_\_\_ / \_\_\_\_\_  
(No. & Street) (City) (State) (Zip Code)

Phone Number: \_\_\_\_\_ / \_\_\_\_\_ Email: \_\_\_\_\_  
(Home) (Cell)

Gender: ☐ MALE ☐ FEMALE Birthdate: \_\_\_\_\_ Citizenship (Country): \_\_\_\_\_

Emergency Contact: \_\_\_\_\_ Relation: \_\_\_\_\_ Phone #: \_\_\_\_\_

Roommate's Name(s): \_\_\_\_\_ Bedding Request: ☐ Beds together ☐ Beds apart

Mobility/Dietary Restrictions: \_\_\_\_\_ Are you celebrating anything special? \_\_\_\_\_

Have you sailed with Norwegian Cruise Line before? ☐ No ☐ Yes Latitudes Rewards #: \_\_\_\_\_

☐ I wish to decline the Travel Protection Plan offered through Norwegian Cruise Line. ☐ I wish to purchase Travel Protection: \$628 platinum



# Cruise Reservation Application—Passenger 2

\$2,999 per person (effective 2/6/24)—includes RT Airfare. \$250 Deposit Per Person Due with Registration. Final Payment Due April 19, 2024.

Name: \_\_\_\_\_ / \_\_\_\_\_ / \_\_\_\_\_  
(as appears on passport) (First Name) (Middle Name) (Last Name)

Address: \_\_\_\_\_ / \_\_\_\_\_ / \_\_\_\_\_ / \_\_\_\_\_  
(No. & Street) (City) (State) (Zip Code)

Phone Number: \_\_\_\_\_ / \_\_\_\_\_ Email: \_\_\_\_\_  
(Home) (Cell)

Gender: ☐ MALE ☐ FEMALE Birthdate: \_\_\_\_\_ Citizenship (Country): \_\_\_\_\_

Emergency Contact: \_\_\_\_\_ Relation: \_\_\_\_\_ Phone #: \_\_\_\_\_

Roommate's Name(s): \_\_\_\_\_ Bedding Request: ☐ Beds together ☐ Beds apart

Mobility/Dietary Restrictions: \_\_\_\_\_ Are you celebrating anything special? \_\_\_\_\_

Have you sailed with Norwegian Cruise Line before? ☐ No ☐ Yes Latitudes Rewards #: \_\_\_\_\_

☐ I wish to decline the Travel Protection Plan offered through Norwegian Cruise Line. ☐ I wish to purchase Travel Protection: \$628 platinum